

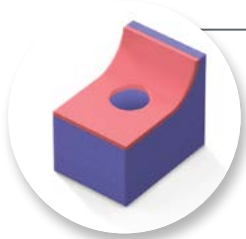
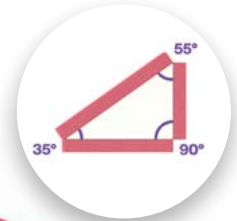


# The Pink Lat Pack™

A New Standard for Safe, Effective, and Efficient Lateral Positioning

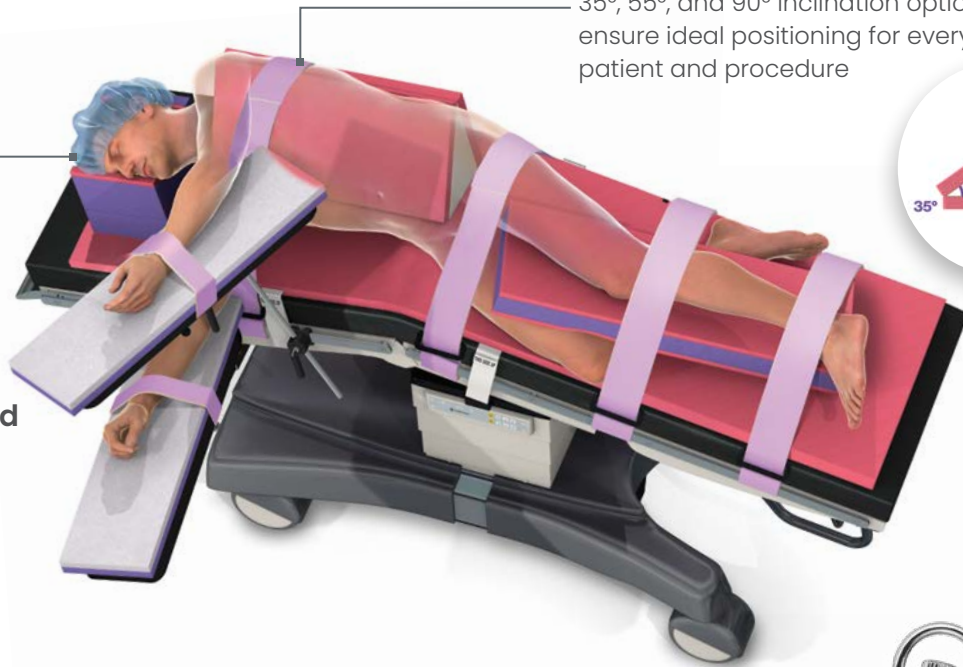
## Multi-Angle Wedge

35°, 55°, and 90° inclination options ensure ideal positioning for every patient and procedure



## Adjustable Lateral Head Positioner

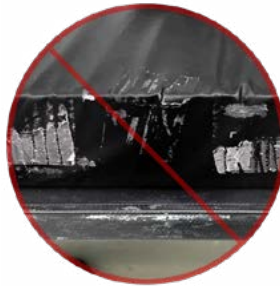
Skin-friendly materials, adjustable height, and an ergonomic design make this the ideal Lateral Head Positioner



Breathable, Skin-friendly,  
Moisture-wicking  
Material

## Safety Maximized

Increase patient safety with DermaProx™ and PinkProtect™: breathable, moisture-wicking materials that gently immerse and envelope areas prone to pressure injury.



## Standard of Care Emphasized

No customization required. Pink Lat Packs™, regardless of weight or BMI, provide a safe, consistent standard of care for every patient, in every procedure, every time.



## Efficiency Optimized

In clinical trials, an average of 15-20 minutes were saved during setup. When necessary, The Pink Lat Pack™ makes repositioning faster, safer, and easier.

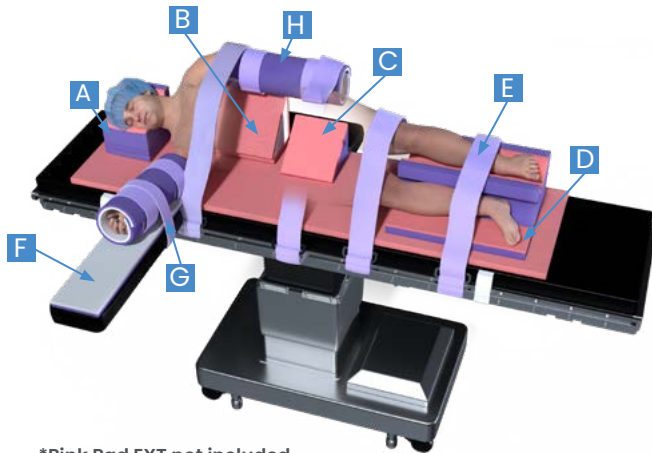
**“HAPI occurrence affects 2.5 million patients per year, adding more than \$43,180 per patient on average in-hospital costs.”**

(October 2014. Agency for Healthcare Research & Quality)

“Prior to working with Xodus Medical, a solution for lateral positioning that was both safe and efficient simply did not exist. The Pink Lat Pack™ combines skin-friendly materials with smart configurations that ensure a consistent standard of care. They save our OR a significant amount of time, especially during setup. Most importantly, the safety of our patients is better than ever.”

— Dr. Domenico Savatta, MD  
Chief of Minimally Invasive & Robotic Adult Urologic Surgery  
New Jersey

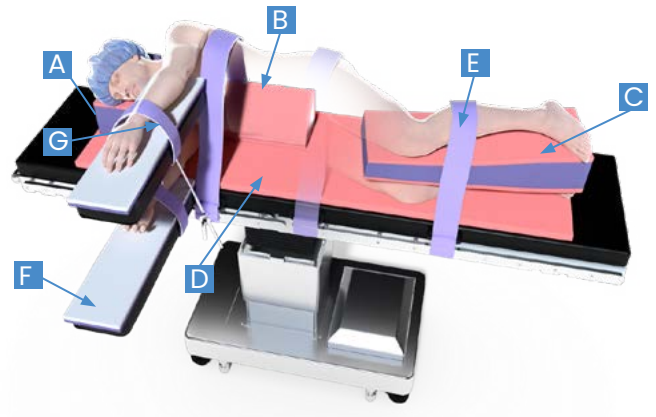
# Pink Lat Pack™ Available Configurations



\*Pink Pad EXT not included  
\*Not all components are pictured

## #LPK10004 – Savatta Pink Lat Pack™

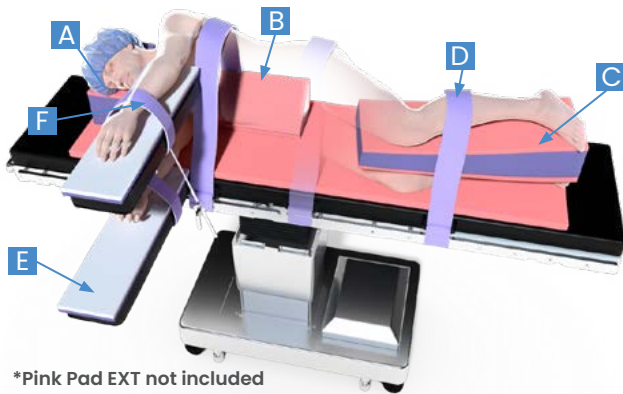
- A. Adjustable Lateral Head Positioner (1)
- B. Multi-Angle Body Wedge (1)
- C. Small Body Wedge (1)
- D. Lateral Leg Positioner (Savatta Style) (1)
- E. Skin-Friendly Body Straps (7)
- F. Armboard Pads with DermaProx™ (1pr)
- G. Skin-Friendly Armboard Straps (1pr)
- H. One-Step™ Arm Protectors with DermaProx™ (1pr)



\*Not all components are pictured

## #LPK10005 – Standard Pink Lat Pack™

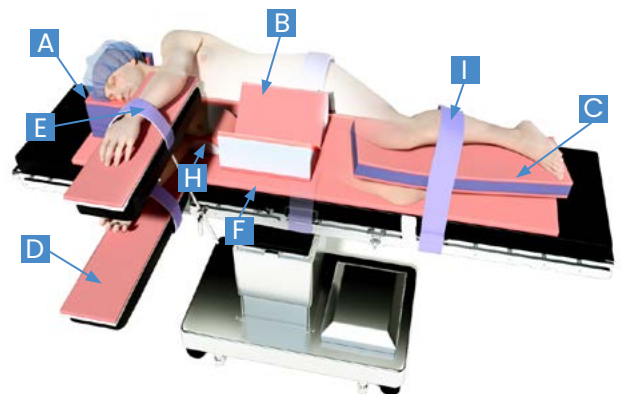
- A. Adjustable Lateral Head Positioner (1)
- B. Multi-Angle Body Wedge (1)
- C. Tapered Intra-Leg Positioner (1)
- D. Pink Pad EXT™ (1)
- E. Skin-Friendly Body Straps (4)
- F. Armboard Pads with DermaProx™ (1pr)
- G. Skin-Friendly Armboard Straps (1pr)
- H. Lift Sheet (1)



\*Pink Pad EXT not included  
\*Not all components are pictured

## #LPK10006 – Modified Pink Lat Pack™

- A. Adjustable Lateral Head Positioner (1)
- B. Multi-Angle Body Wedge (1)
- C. Tapered Intra-Leg Positioner (1)
- D. Skin-Friendly Body Straps (4)
- E. Armboard Pads with DermaProx™ (1pr)
- F. Skin-Friendly Armboard Straps (1pr)

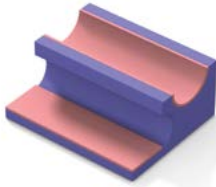


\*Not all components are pictured

## #LPK10015 – Pink Lat Pack™: Thoracic

- A. Adjustable Lateral Head Positioner (1)
- B. Low Profile Lateral Wedge (2)
- C. Intra-Leg Positioner (1)
- D. Armboard Pads with PinkProtect™ (1pr)
- E. Skin-Friendly Arm Board Straps (2)
- F. Pink Pad EXT™ (1)
- G. Lift Sheet (1)
- H. Pink Arc (Axillary Roll) (1)
- I. Skin-Friendly Body Straps (3)

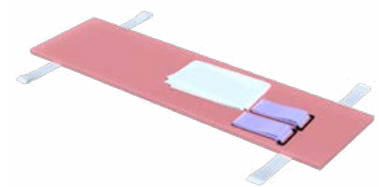
# Individual Positioning Solutions



**40941** - Lateral Leg Positioner (Savatta Style)



**40471** - Adjustable Lateral Head Positioner



**40600** - Pink Pad™ EXT (w/ Lift Sheet + Body Strap)



**40943** - Small Body Wedge



**40948** - Multi-Angle Body Wedge (Small)



**40947** - Low-Profile Lateral Wedge



**40945** - 3" Intra-Leg Positioner



**40547** - Pink Armboard Pads w/ PinkProtect™ + Arm Straps



**40946** - Tapered Intra-Leg Positioner



Various Options Available  
PinkProtect™ Dual Layer Pads



Various Options Available  
Pink Arcs



702 Prominence Drive  
New Kensington, PA 15068  
Tel: 724-337-5500  
Fax: 724-337-0555  
xodusmedical.com  
info@xodusmedical.com

FDA REGISTERED  
ISO 13485 CERTIFIED



MADE IN THE  
**USA**

