

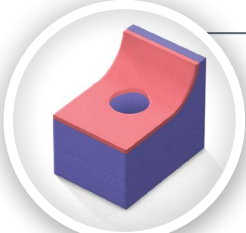
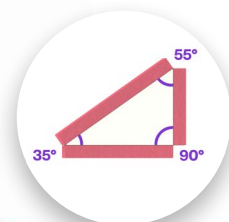


# The Pink Lat Pack™

A new standard for safe, effective and efficient lateral positioning

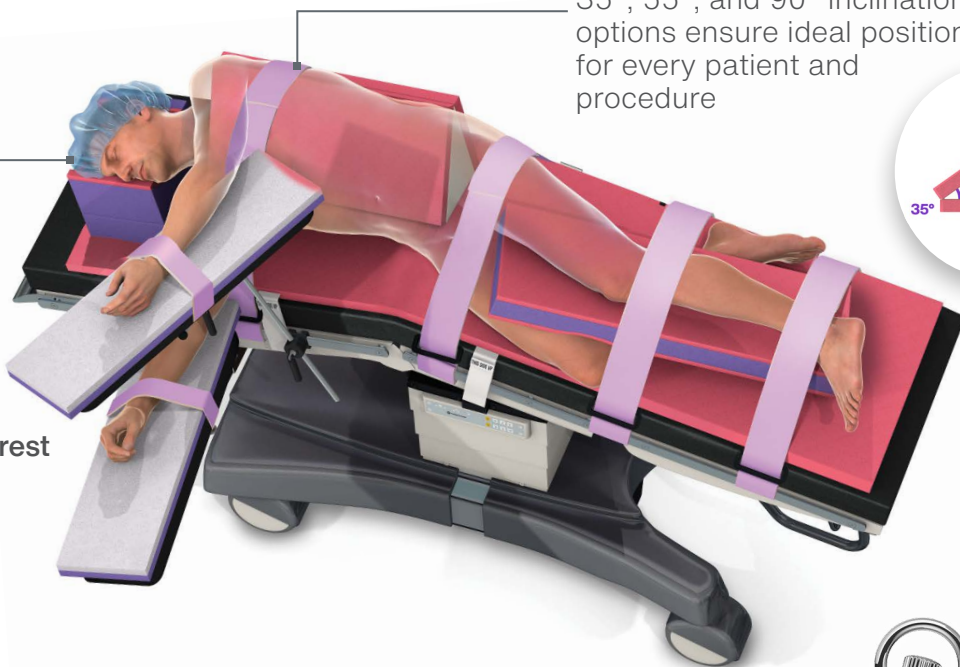
## Multi-Angle Wedge

35°, 55°, and 90° inclination options ensure ideal positioning for every patient and procedure



## Adjustable Lateral Headrest

Skin-friendly materials, adjustable height, and an ergonomic design make this the ideal lateral headrest



Breathable, Skin-friendly,  
Moisture-wicking  
Material

## Safety Maximized

Increase patient safety with DermaProx™ and DermaProx Pink™: breathable, moisture-wicking materials that gently immerse and envelope areas prone to pressure injury.



## Standard of Care Emphasized

No customization required. Pink Lat Packs, regardless of weight or BMI, provide a safe, consistent standard of care for every patient, in every procedure, every time.



## Efficiency Optimized

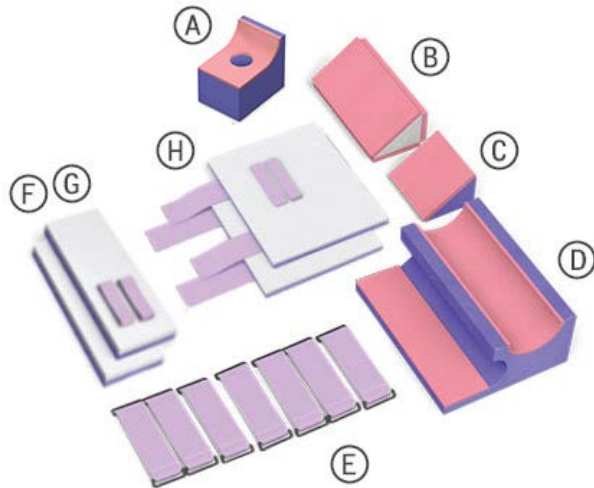
In clinical trials, an average of 15-20 minutes were saved during setup. When necessary, The Pink Lat Pack™ makes repositioning faster, safer and easier.

*“HAPI occurrence affects 2.5 million patients per year, adding more than \$43,180 per patient on average in-hospital costs.”*

(October 2014. Agency for Healthcare Research & Quality)

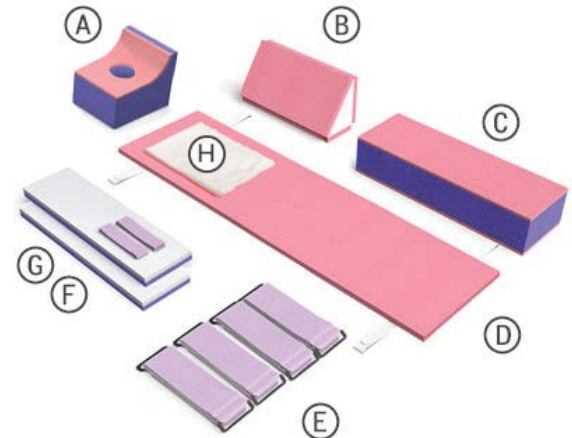


# Pink Lat Pack™ Available Configurations



## Savatta Pink Lat Pack™ #LPK10004:

- (A) Adjustable Lateral Headrest (1)
- (B) Multi-Angle Body Wedge (1)
- (C) Small Body Wedge (1)
- (D) Lateral Leg Positioner (Savatta Style) (1)
- (E) Skin-Friendly Body Straps (7)
- (F) Armboard Pads with DermaProx™ (1pr)
- (G) Skin-Friendly Armboard Straps (1pr)
- (H) One-Step™ Arm Protectors with DermaProx™ (1pr)

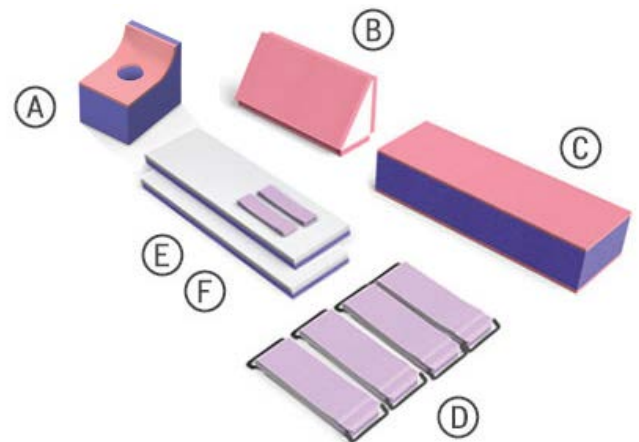


## Standard Pink Lat Pack™ #LPK10005:

- (A) Adjustable Lateral Headrest (1)
- (B) Multi-Angle Body Wedge (1)
- (C) Intra Leg Positioner (1)
- (D) Pink Pad EXT™ (1)
- (E) Skin-Friendly Body Straps (4)
- (F) Armboard Pads with DermaProx™ (1pr)
- (G) Skin-Friendly Armboard Straps (1pr)
- (H) Lift Sheet (1)

“Prior to working with Xodus Medical, a solution for lateral positioning that was both safe and efficient simply did not exist. The Pink Lat Pack combines skin-friendly materials with smart configurations that ensure a consistent standard of care. They save our OR a significant amount of time, especially during setup. Most importantly, the safety of our patients is better than ever.”

— Dr. Domenico Savatta, MD  
Chief of Minimally Invasive &  
Robotic Adult Urologic Surgery  
New Jersey

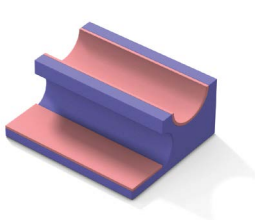


## Modified Pink Lat Pack™ #LPK10006:

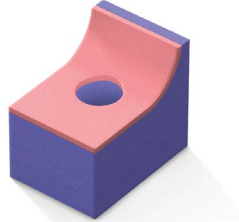
- (A) Adjustable Lateral Headrest (1)
- (B) Multi-Angle Body Wedge (1)
- (C) Intra Leg Positioner (1)
- (D) Skin-Friendly Body Straps (4)
- (E) Armboard Pads with DermaProx™ (1pr)
- (F) Skin-Friendly Armboard Straps (1pr)



# Individual Positioning Solutions



**40941** - Lateral Leg Positioner  
(Savatta Style)



**40471** - Adjustable Lateral  
Headrest (2nd Generation)



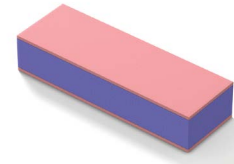
**40598** - Pink Pad™ EXT (Sold  
w/ Lift Sheet + Body Straps)



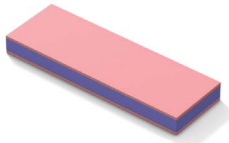
**40943** - Small Body Wedge



**40942** - Multi-Angle Body  
Wedge



**40946** - 6" Intra-Leg Positioner



**40945** - 3" Intra-Leg  
Positioner



**40547** - Pink Arm Board Pads  
w/DermaProx™ + Arm Straps



**40537** - Arm Board Pads  
w/DermaProx™ + Arm Straps



**40433** - One-Step™ Arm  
Protectors w/ DermaProx™



**30220** - Skin-Friendly Body  
Straps

